

SCV-4,4EN

SCV-4 check valve prevents backflow of fluid. It is widely used in steam pipelines or cold and hot water pipelines.

■Features

1. The valve body and valve seat are made by stainless steel that have excellent durability.

■Specifications

Model	SCV-4	SCV-4EN
Nominal size	15-50A	15-250A
Application	Steam, Air, Cold and hot water, Oil, Other non-dangerous fluids	
Maximum pressure	1.6 MPa	
Maximum temperature	200°C	300°C
Installation posture	Horizontal, vertical *1	
Connection	JIS Rc, NPT screwed	BS PN16 flanged
Minimum valve	0.05 MPa	
Material	Body	EN-GJL-250 JL1040 (JIS FC250)
	Valve	X20Cr13 1.4021 (JIS SUS420J1)

*1 When installing on vertical piping, please make the flow direction of the fluid from the ground to the top.

- This product cannot be disassembled.
- A small amount of fluid leaks at the valve seat. So, it should not be used for applications requiring complete closing.

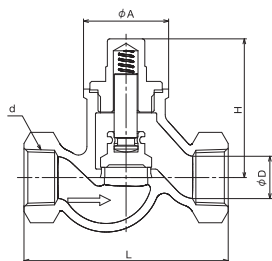
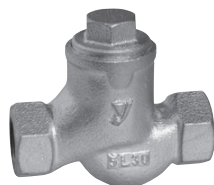
■Dimensions (mm) and Weights (kg)

· SCV-4

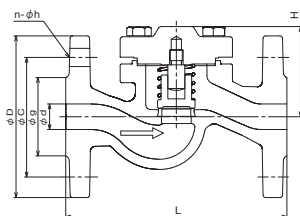
Nominal size	d	H	L	D	A	Weight
15A	NPT 1/2	56	90	15	41	0.7
20A	NPT 3/4	56	100	20	41	0.9
25A	NPT 1	82	120	25	50	1.2
32A	NPT 1-1/4	99	140	32	60	1.7
40A	NPT 1-1/2	112	170	40	68	2.2
50A	NPT 2	121	200	50	84	3.6

· SCV-4EN

Nominal size	d	H	L	Flange BSEN PN16				Weight
				D	C	G	n-h	
15A	15	56	130	95	65	46	4-14	2.1
20A	20	56	150	105	75	56	4-14	2.7
25A	25	67	160	115	85	65	4-14	3.8
32A	32	76	180	140	100	76	4-19	5.5
40A	40	89	200	150	110	84	4-19	7.4
50A	50	96	230	165	125	99	4-19	9.5
65A	65	104	290	185	145	118	4-19	15.0
80A	80	124	310	200	160	132	8-19	20.0
100A	100	161	350	220	180	156	8-19	29.0
125A	125	174	400	250	210	184	8-19	41.0
150A	150	197	480	285	240	211	8-23	66.0
200A	200	248	600	340	295	266	12-23	111
250A	250	295	730	405	355	319	12-28	196



SCV-4



SCV-4EN

■ Pressure Loss Chart (For water)

