

# BLV-1

10K

16K

20K

Bronze

Ductile

Body of BLV-1 is made of bronze and ball is made of chrome-plated or stainless steel.  
Widely applicable for steam, air, water or oil application

## Specifications

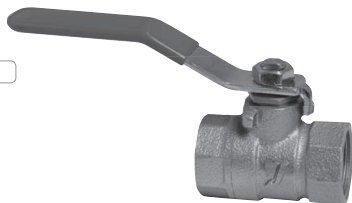
Application	Steam, Air, Cold and hot water, Oil, Other non dangerous fluid	
Maximum pressure	Saturated steam: 1.0 MPa	
	Water, oil, air or other non-dangerous fluid at 40°C or lower: 4.12 MPa	
Material	Body	Bronze
	Ball	Cr plated brass or stainless steel
	Stem	Brass
Connection	JIS Rc screwed	

\* Valve (ball) is closed at the time of shipment from factory.

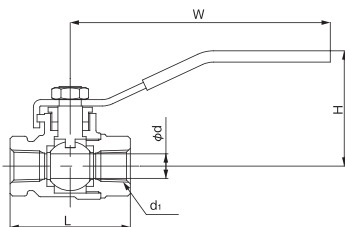
\* There is no restriction on flow direction.

## Dimensions (mm) and Weight (kg)

Nominal size	d <sub>1</sub>	d	L	H	W	Weight
8A	Rc 1/4	10	49	47	106	0.2
10A	Rc 3/8	10	49	47	106	0.2
15A	Rc 1/2	12.7	53	47	106	0.3
20A	Rc 3/4	15	56	52	106	0.3
25A	Rc 1	20	68	55	106	0.5
32A	Rc 1-1/4	25	86	66	136	0.8
40A	Rc 1-1/2	31.8	96	72	136	1.2
50A	Rc 2	38	108	77	136	1.8



YOSHITAKE BLV-1  
600mm



# GLV-1

10K

16K

20K

Bronze

Ductile

Wetted parts of GLV-1 are made of bronze or dezincification resistant brass.  
Widely applicable for steam, air, water or oil application.

## Specifications

Application	Steam, Air, Cold and hot water, Oil, Other non dangerous fluids	
Maximum pressure	1.0 MPa	
Maximum temperature	185°C	
Material	Body	Bronze
	Bonnet	Brass or bronze
	Disc	Brass or bronze
Connection	JIS Rc screwed	

\* Valve is closed at the time of shipment from factory.

## Dimensions (mm) and Weight (kg)

Nominal size	d	L	H	D	Weight
15A	Rc 1/2	50	76	54	0.3
20A	Rc 3/4	57	86	61	0.4
25A	Rc 1	65	100	68	0.6
32A	Rc 1-1/4	75	123	77	0.9
40A	Rc 1-1/2	85	135	77	1.1
50A	Rc 2	100	159	83	1.7

