

400

Plain

Flap

Ball

Spinner

Stainless

Mica plate

Protective wire mesh

With protective cover

■ Features

- Fluid flow can be detected from the rotation of the spinner, and flow rate change is identified by its rotating speed.
- Easy to assemble and disassemble due to simple design. Can be connected to horizontal/vertical piping.



■ Specifications

Application	Cold and hot water	
Maximum working pressure	0.7 MPa	
Max. temperature	100°C	
Max. thermal shock	40°C	
Material	Body	Cast bronze
	Glass	Borosilicate glass
	Spinner	Special heat-resistant resin
Connection	JIS Rc screwed	

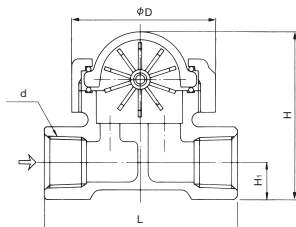
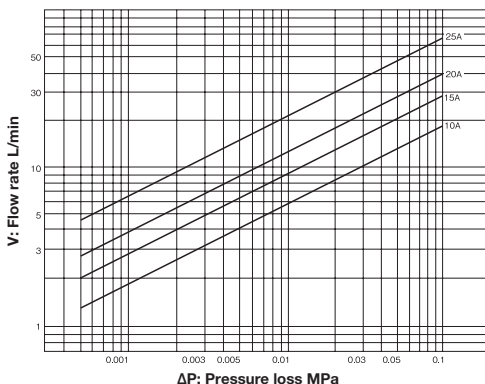
· When using this sight glass at a temperature difference of 40°C or more, note that the glass may get damaged if the temperature rapidly rises or the glass is cooled from outside.

· Glass part and spinner are consumable supply.

■ Dimensions (mm) and Weights (kg)

Nominal size	d	L	H ₁	H	D	Weight
10A	Rc 3/8	76	12	67	54	0.45
15A	Rc 1/2	76	14.5	69.5	54	0.50
20A	Rc 3/4	83	17	76	54	0.60
25A	Rc 1	89	21.5	93.5	66.5	0.95

■ 400 Pressure Loss Chart (For Water)



■ Min. & Max. Flow Rate (Water)

Nominal size	Min. flow rate L/min	Max. flow rate L/min
10A	0.8	8.3
15A	1.0	13
20A	1.5	18
25A	2.3	30

· The minimum flow rate is the value required for the spinner to continuously rotate.

· The maximum flow rate is the value when pressure loss is approximately 0.02 MPa. For further information, see the pressure loss chart.