

150L



■Features

- Mixed state or color of two component fluid can be checked.
- Intermittent fluid flow can be checked.
- Can be connected to horizontal/vertical piping.
- Mica plate is required for steam condensate.
- The 150L Series sight glass come in a variety of materials, including ductile cast iron and cast stainless steel, which are available to choose from.

■Specifications

Model	150L-F	150L-13S	150L-13F
Application	Cold and hot water, Oil, Other non-dangerous fluids		
Nominal size	65A-150A	15A-50A	15A-100A
Maximum working pressure	1.0 MPa		
Max. temperature	150°C		
Max. thermal shock	100°C		
Material	Body	Ductile cast iron	Cast stainless steel
	Glass	Hardened glass	
Connection	JIS 10K FF flanged	JIS Rc screwed	JIS 10K FF flanged

- Available with mica plate for steam condensate. However, maximum allowable working pressure is 0.6 MPa.
- Available with protector (150LP-□□S-□□F).
- Glass part is consumable parts.

■Dimensions (mm) and Weights (kg)

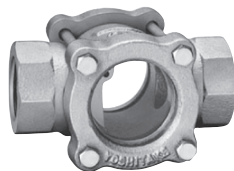
• 150L-13S

Nominal size	d	L	W	Weight
15A	Rc 1/2	76	35	0.73
20A	Rc 3/4	89	35	0.82
25A	Rc 1	114	44	1.5
32A	Rc 1-1/4	127	53	2.3
40A	Rc 1-1/2	140	57	2.9
50A	Rc 2	162	73	5.8

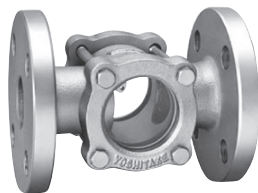
• 150L-F-150L-13F

Nominal size	d	L	W	Weight	
				150L-F	150L-13F
15A	15	130	35	-	2.12
20A	20	130	35	-	2.47
25A	25	150	44	-	4.1
32A	32	160	53	-	5.4
40A	40	170	57	-	5.6
50A	50	200	73	-	9.7
65A	65	235	97	14.7	16.0
80A	73	235	97	15.1	16.5
100A	100	277	130	26.5	29.2
125A	125	336	155	36.8	-
150A	140	380	165	60.5	-

* For 150L-F, it is available from 65A to 150A. For 150L-13F, it is available from 15A to 100A.



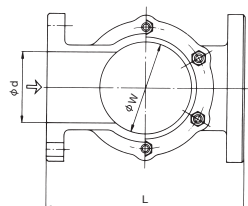
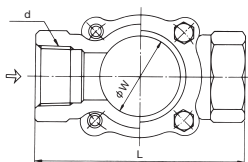
150L-13S



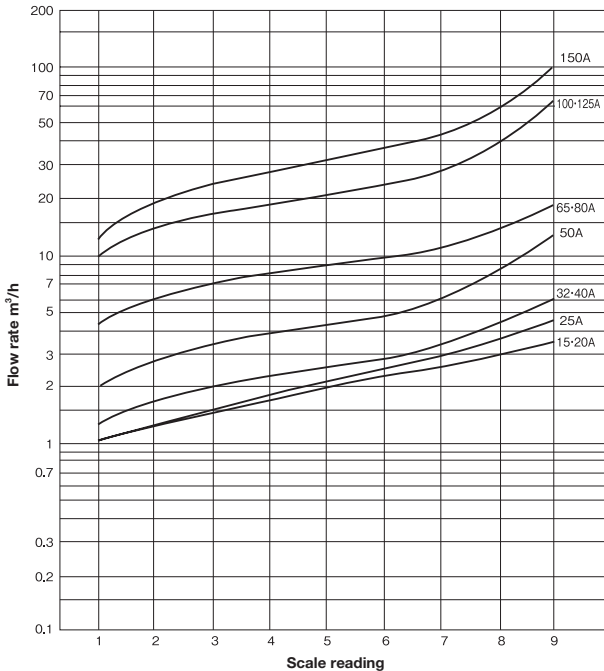
150L-F-150L-13F

7

Sight Glass/Flow Meter



Flow Rate Characteristics Chart (For Water, Horizontal Piping)



The flow characteristics shown in the chart are just for reference and cannot be used for actual measurement.

Sight glass model (type 150) code

