

SECTION 4.1_KSEP

EMERGENCY VENT COVER PRESSURE RELIEF

INTRODUCTION

The model KSEP is designed to provide emergency pressure relief for storage tanks when exposed to overpressures that are not handled by standard tank vents. These vents provide the capacity to meet API standard 2000 for emergency venting due to fire exposure when properly sized. These covers also provide quick easy access for tank inspection and maintenance.

Setting Pressure

KSEP Permanent Setting	Min. 50 mmW.C ~ Max. 700 mmW.C
------------------------	--------------------------------

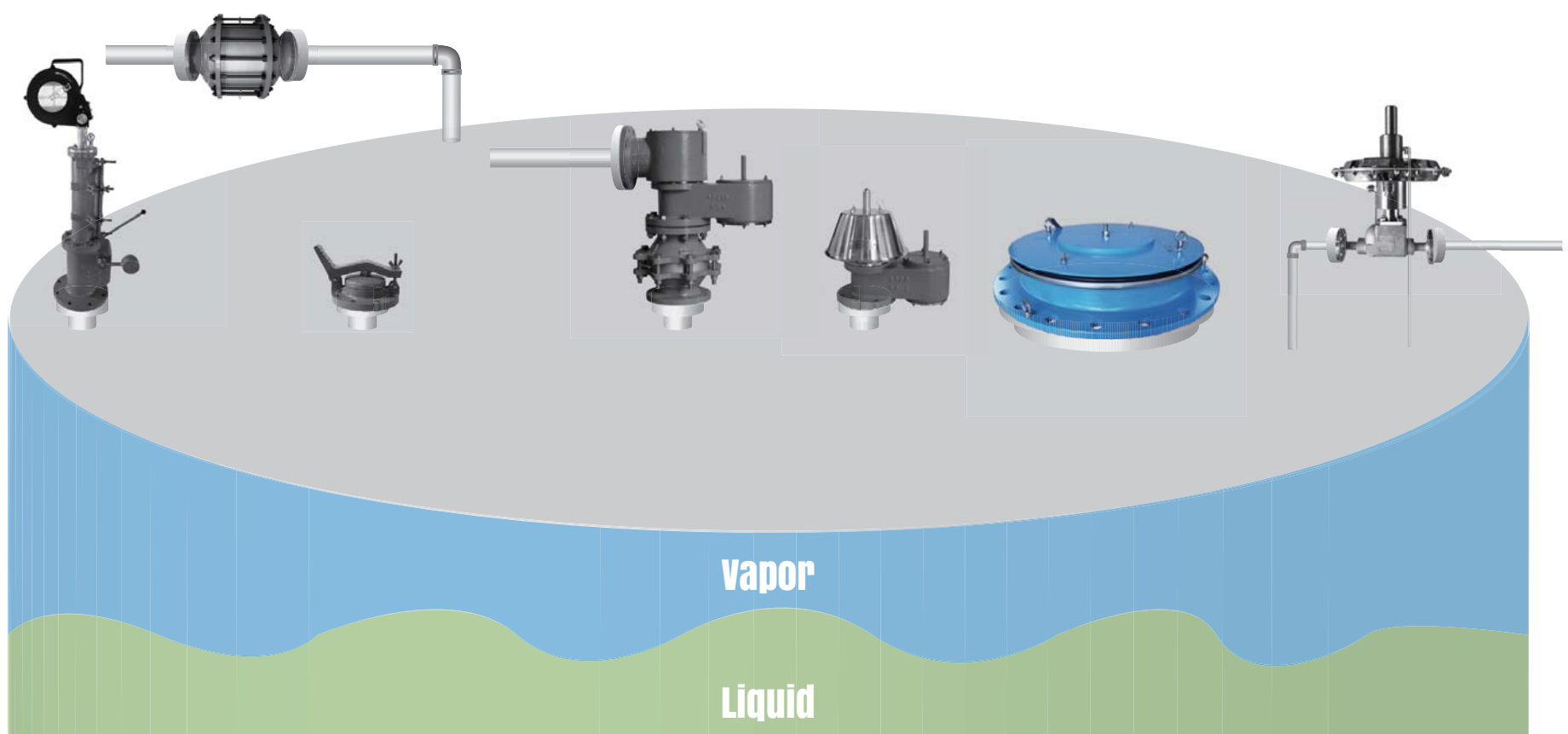
Body Materials Aluminium, Carbon Steel, SS304 and SS316 with various trims
(Different materials available on request)

Sizes range DN 400, 450, 500 and DN 600 with ANSI 150lb or API 650 flanges
(Different connections available on request)

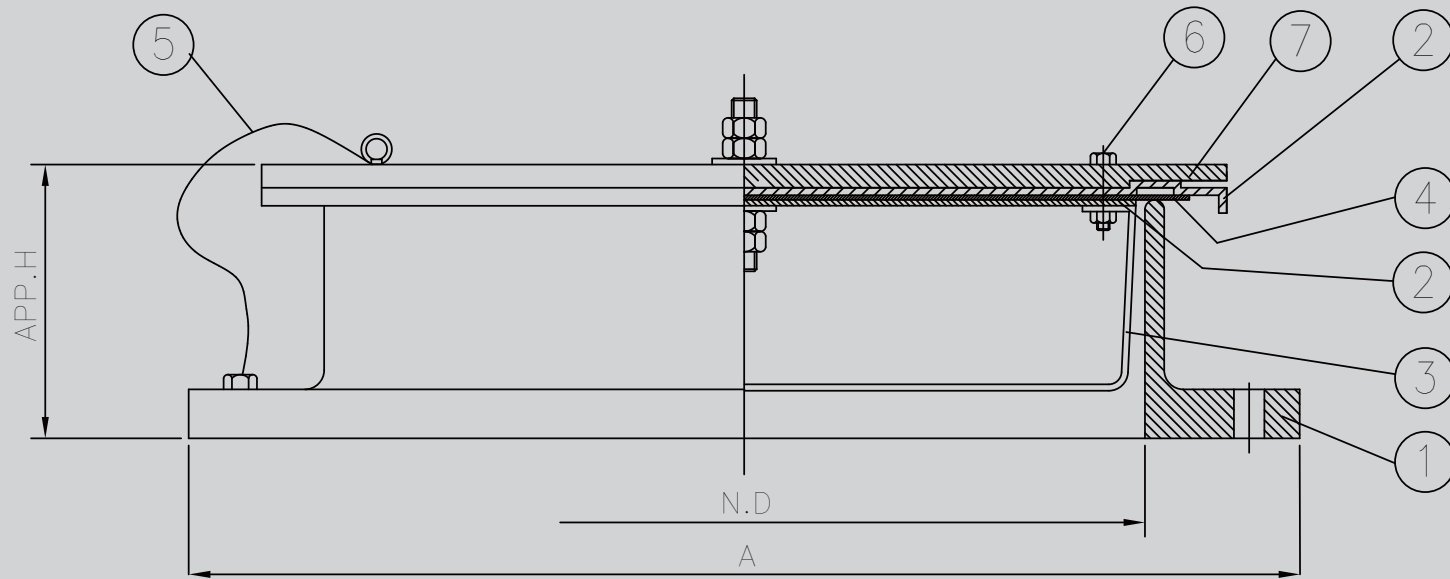
Rules & Certifications API 2000

Optimum / optional Design & Arrangements Stem Jacket type, Steam Tracing type, Proximity type, Teflon Coating/Lining type

APPLICATION



OUTLINE DRAWING



DIMENSION TABLE

SIZE		16"	18"	20"	24"
N.D		400	450	500	600
A	API 650	597	635	660	762
	ANSI 150#	597	635	700	815
Approx. H	MIN.	115	115	115	115
	MAX.	150	165	180	200

NOTE CERTIFIED DIMENSIONS AVAILABLE UPON REQUEST (STD : API650).

COMPONENT MATERIAL

ITEM NO	COMPONENT	BODY	ALUMINIUM	C.S	SS304	SS316
		TRIM	SS304	SS304	SS304	SS316L
1	BODY		B26-319.F	A216-WCB	A351-CF8	A351-CF8M
2	COVER & PLATE		SS304	SS304	SS304	SS316L
3	GUIDE		SS304	SS304	SS304	SS316L
4	DIAPHRAGM		TEFLON			
5	EARTH WIRE		SS304	SS304	SS304	SS304
6	HEX BOLT/NUT		SS304	SS304	SS304	SS304
7	LOADING WEIGHT		C.S OR S.S			

NOTE AL – Aluminium, C.S – Carbon Steel, S.S – Stainless Steel